

WESTPAC

CRUISE

62-64



U.S.S. DE HAVEN

The second destroyer to be named after the famed mariner and arctic explorer, Lieutenant Commander Edwin Jessee DeHaven, USS DE HAVEN (DD 727) plunged into the waters of Kennebec River for the first time on 9 January 1944. She was destined to participate in no less than five "star" operations during World War II and to receive the second Navy Unit Commendation awarded during the Korean Conflict.

After arriving on her present tour in WestPac in October 1961, DE HAVEN was nominated for the Squadron "E" for fiscal year 1961. In July 1962, she painted "E"'s and hash marks on many areas of the ship including the coveted Battle Efficiency "E" within Destroyer Squadron 9.

Some of the most memorable events of the WestPac tour were the participation in the Gordon Cooper space flight, the "People to People" program at Kobe, and Station Ship Hong Kong. Some of her favorite liberty ports include Kaohsiung, Sasebo, Hong Kong, Manila, Subic Bay, Kobe, Kyoto and, of course, her home port of Yokosuka.

Rounding out the cruise, DE HAVEN participated in the 22nd Anniversary of the Coral Sea Battle. This was a most enjoyable trip for all with an extra added attraction of "crossing the line". The return trip to Yokosuka resulted in an unscheduled and unexpected "tour" in the South China Sea. On 7 July 1964, DE HAVEN got underway for CONUS.



CDR JOHN A. DELANEY, USN
Commanding Officer



Commander John A. Delaney, USN, a native of Lawrence, Massachusetts, was graduated from Boston College with the class of 1943 and received his commission in the United States Navy after six months of Midshipman school at Notre Dame University.

Initially serving in the Battleship WISCONSIN (BB-64) in the Pacific Theater until the end of World War II; he was then ordered to Holy Cross College as an NROTC Instructor on gunnery and seamanship. From 1949 to 1951 he was assigned to the USS GOODRICH (DDR 831) as Gunnery Officer.

Having served as Gunnery and Deck Inspector for Fleet Underway Training Unit from 1951 to 1953, he was ordered to General Line School, Monterey, California, and then as Executive Officer, USS SHELDRAKE (AGS-19) in Caribbean and Atlantic waters.

During the years 1956 through 1958, Commander DELANEY served as Flag Secretary and Aid to Commander Service Force, U. S. Pacific Fleet and in 1958, he was assigned as Executive Officer, USS WALKER (DDE-517).

Following a tour as Instructor at the U. S. Naval Academy from 1959 to 1963, he next assumed the duties of Operations Officer on the U. S. S. GALVESTON (CLG-3) where he served until ordered as Commanding Officer of the U. S. S. DE HAVEN (DD-727).



LCDR CHARLES L. HOROWITZ, USN

Executive Officer

Lieutenant Commander Charles L. Horowitz hails from Utica, New York. Joining the military establishment in 1948, LCDR Horowitz served first in the U. S. Marine Corps Reserve, then in the Naval Reserve Officers Training Candidate program, followed by the U. S. Naval Academy, graduating into active naval service in 1954. Since that time, he has served aboard the USS VALLEY FORGE (CVS 45), USS McCARD (DD 822), USS CONWAY (DDE 507) and the USS WESTCHESTER COUNTY (LST 1167) prior to reporting to USS DE HAVEN as Executive Officer.

ENGINEERING DEPT



Lt. J.G. Lloyd G. McIntire, USN
Engineering Officer



Lt. J.G. Roy M. Wallace
Main Propulsion



Ens. John H. Newsom
Assistant Engineer



Ens. Richard M. Barney
Damage Control

M DIVISION



FIRST ROW: BOZEMAN, BUTALLA, PHELPER, MILLER, VOEGELE,
BEAVER

SECOND ROW: WILSON, HUFFORD, KEE, PATTERSON, RINDELS,
KILLINGBECK, BEAR

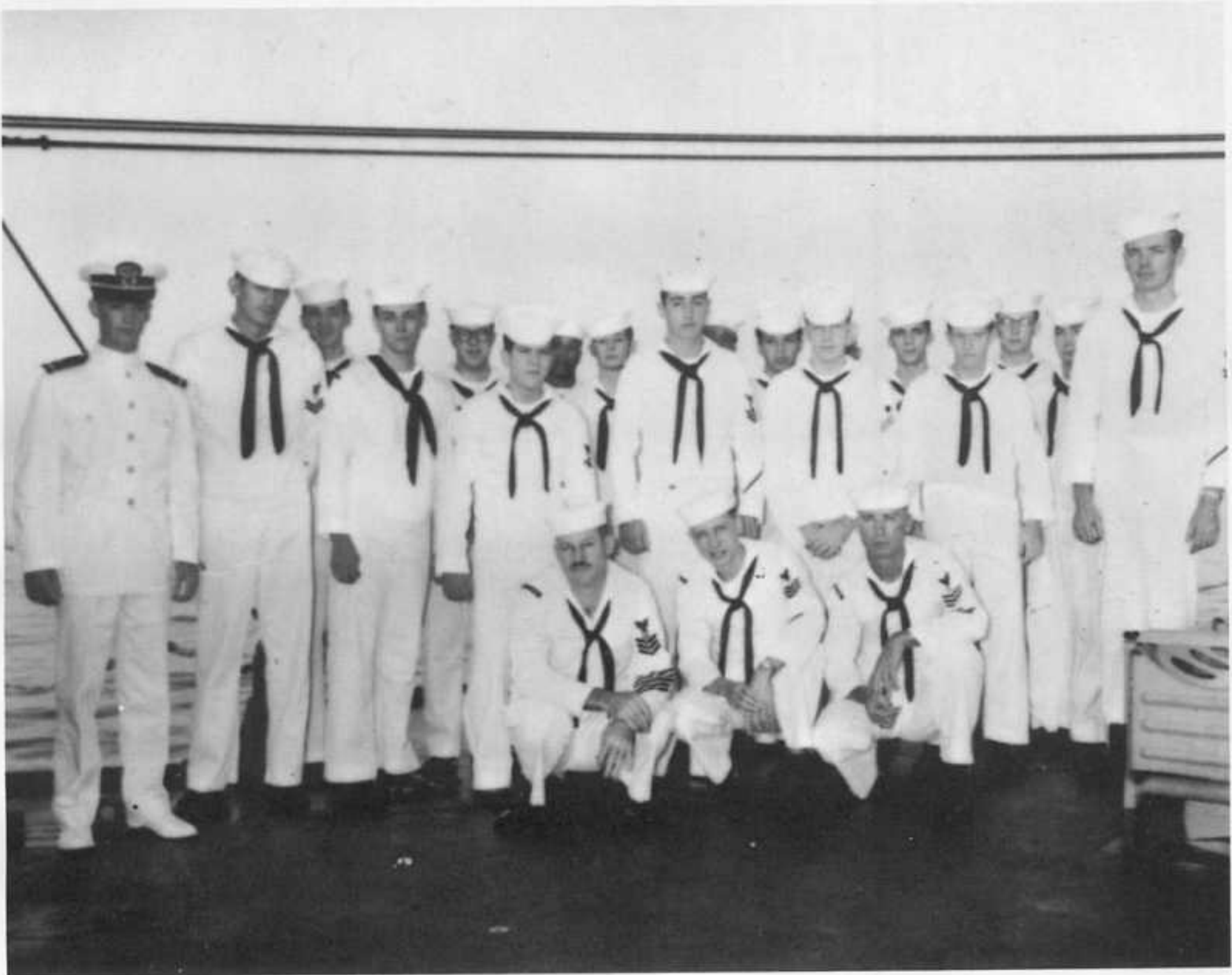
THIRD ROW: MINTZ, BUCHANNAN, BRYANT

R DIVISION

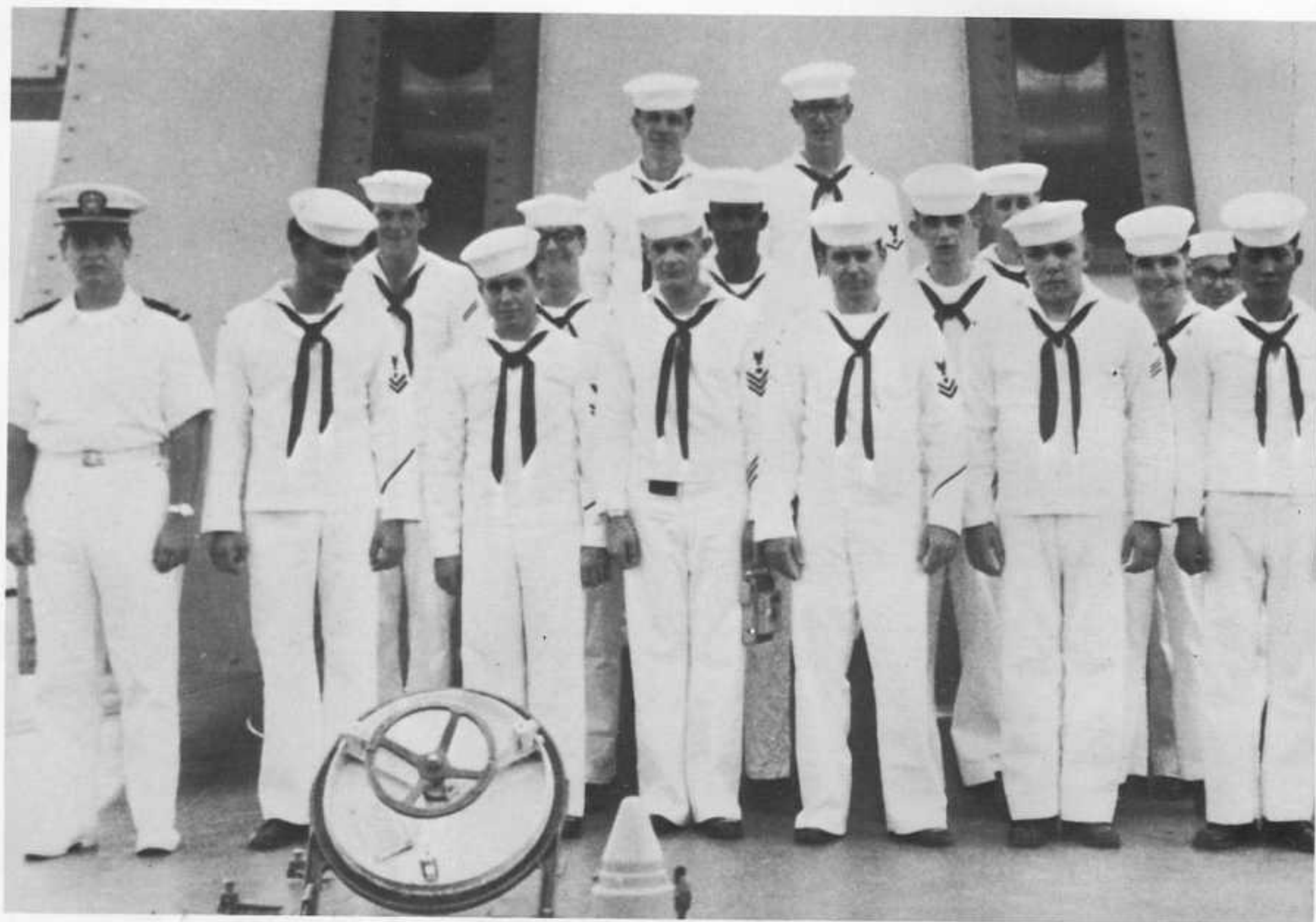
FIRST ROW: HARDING, RICE, MILLIS

SECOND ROW: ENS BARNEY, JACKSON, BABCOCK, LEDYARD, JOHNSON,
ELES, HONADEL, HALE

THIRD ROW: SANTANGELO, REED, SMITH, WELL, NEVELS, GUSTAFSON,
FULLER, ZEIGLER, WILLIAMSON



B DIVISION



FIRST ROW: ENS NEWSOME, SOCHIA, LEWIS, WILLIS, GARRIDO, BOREM,
ESSLER
SECOND ROW: HENDREN, FREDERICKS, JONES, HARRIS, CROWL
THIRD ROW: SEIDA, DAVIS, VANDERLAN, LUBLINER

OPERATIONS DEPT



LTJG RICHARD S. DEROSE, USN
OPERATIONS OFFICER



LTJG RICHARD M. HOWLAND
COMBAT INFORMATION



LTJG JAMES R. CARR
ELECTRONICS MATERIAL



ENS BRUCE C. COOK
COMMUNICATIONS



ENS THEO. E. SCHELENSKI
ELECTRONICS WARFARE

OC DIVISION



FIRST ROW: ENS COOK, HIGGS, REMILLARD, PATTERSON,
VERCELES
SECOND ROW: SEMONES, PARKER, LUSTER, BATES

OI DIVISION

FIRST ROW: JOHNSON, GALVIN, RUSSELL, HAAS, ROLAND,
LTJG HOWLAND

SECOND ROW: PITTS, WILLIAMS, MILLER, STEWIG, McCLAIN



OM DIVISION



FIRST ROW: LTJG CARR, MARION, KOUBA, LONG, BRILL, SORIANO,
RIVERA, BOWEN

SECOND ROW: LARKINS, INGRAM, BUNETTA, BRIZUELLA, CURTIS,
WEBSTER, BRASHEARS, AALSETH, WYLIE, NIELSON, BLAND, PRICER

WEAPONS DEPT



Lt. J.G. Brooks G. Townsend, USN
Weapons Officer



Lt. J.G. Jessie I. Lanehart
Anti-Submarine



Lt. J.G. Robert J. Novack
Main Battery



Ens. Dwayne O. Norris
First Lieutenant

1ST DIVISION



FIRST ROW: ENS NORRIS, SEPULVEDA, LINTHICUM, DEBAECKE,
HARDWICK, SHOCKLEY
SECOND ROW: ROMERO, REAGAN, HOLMES, TIPPELT, GREHALVA

2ND DIVISION

FIRST ROW: SHAW, HAYES, ENS NORRIS, WALTERS, LAMBERT, McKENNA
SECOND ROW: THOMPSON, SELAK, CODY, HOTTLE, MACHUTA, FLEMING
THIRD ROW: COWDY, VENENGA, WHISENANT, REDING, FOREMAN, BAIN,
ANDREWS



FOX DIVISION



FIRST ROW: COPE, TAYLOR, STRONG, KROG, GLAESER, MELILLO,
LTJG LANEHART
SECOND ROW: GODWIN, GUSTIN, BARONE, HUNTER, FOREMAN,
ADOLPHS

G DIVISION

FIRST ROW: WINGERT, STONE
SECOND ROW: NEWLAND, LINDSEY, KIRBY, HALL, JONES, LTJG NOVACK
THIRD ROW: WILLIAMS, NEWMAN, SARINSKI, VALENTINE, WRIGHT



SUPPLY DEPT



Lt. J.G. James P. Davidson, SC, USNR
Supply Officer



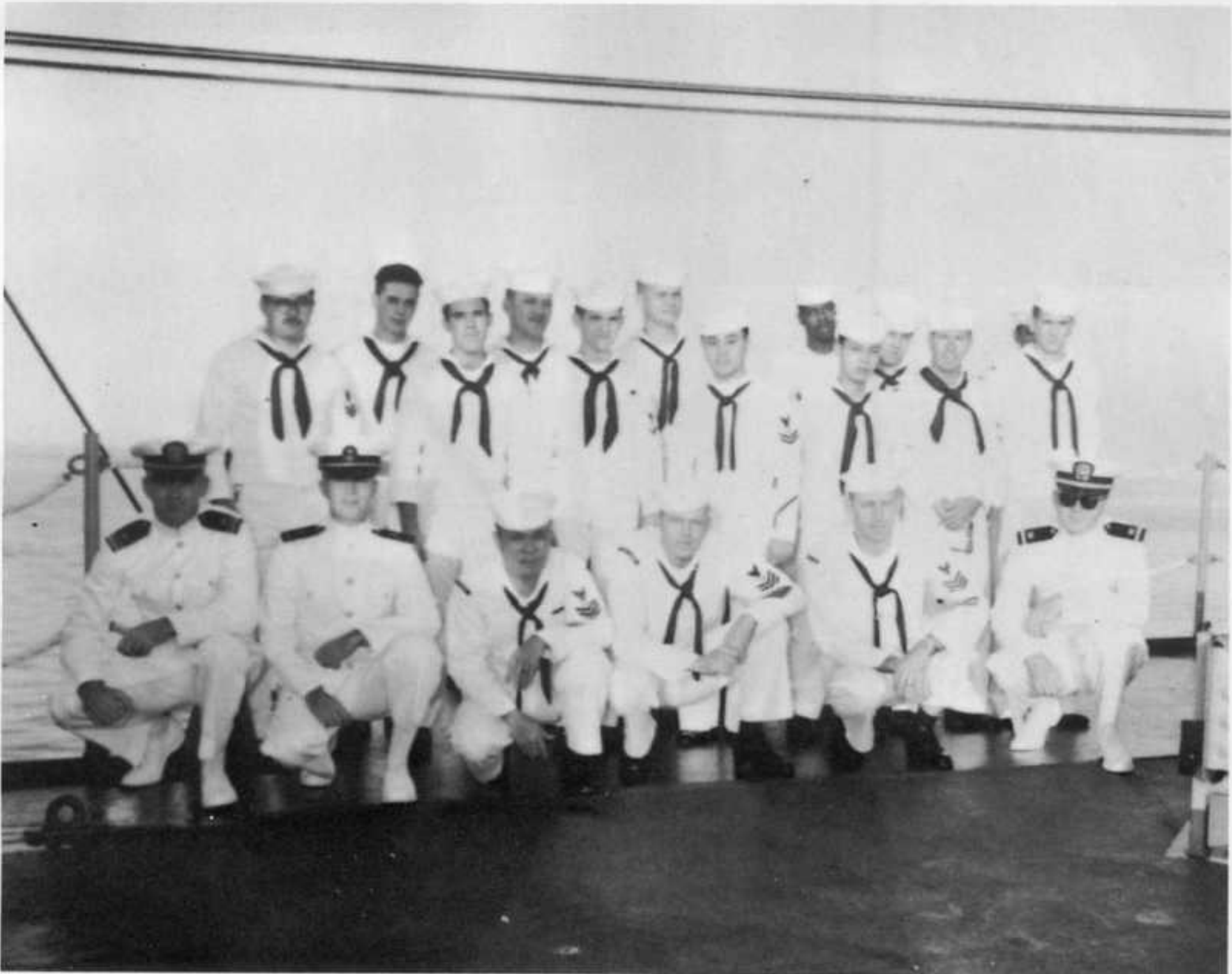
Ens. Eric B. Jones, SC, USNR
Disbursing Officer

S DIVISION

FIRST ROW: LTJG DAVIDSON, MIDN FOSTER, ANTONIO, OVER, HEDREN,
ENS JONES

SECOND ROW: CARRO, McCOOL, COSTIGANE, YAP, ILANO, LIMB,
DONALDSON

THIRD ROW: POE, SAYLER, SWENSON, PRATT, McDOWELL



MIDSHIPMEN



Midshipman Rosen



Midshipman Kohl





Midshipman Burgess



Midshipman Swank



Midshipman Foster



Midshipman Parker



GREAT BUDDHA OF KAMAKURA



*Buddhist shrine
Kamakura*



Shogunate bell temple



*Club Allience
Yokosuka*



Chapel of Hope

HONG KONG



HONG KONG Pearl of the Orient



and her poor



Aberdeen Floating Restaurant



the boatmen





HONG KONG the old

and the new

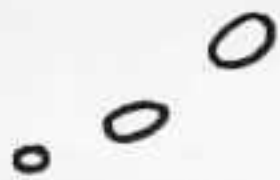


KAOHSIUNG



Harbor entrance





Work, work, work, that's all I think of . . . almost



*No— first you file
and then you polish*



Right standard what?



Who stole the cork?



*You dropped what?
where?*



*Now push it down
DE HAVENS own button crusher*



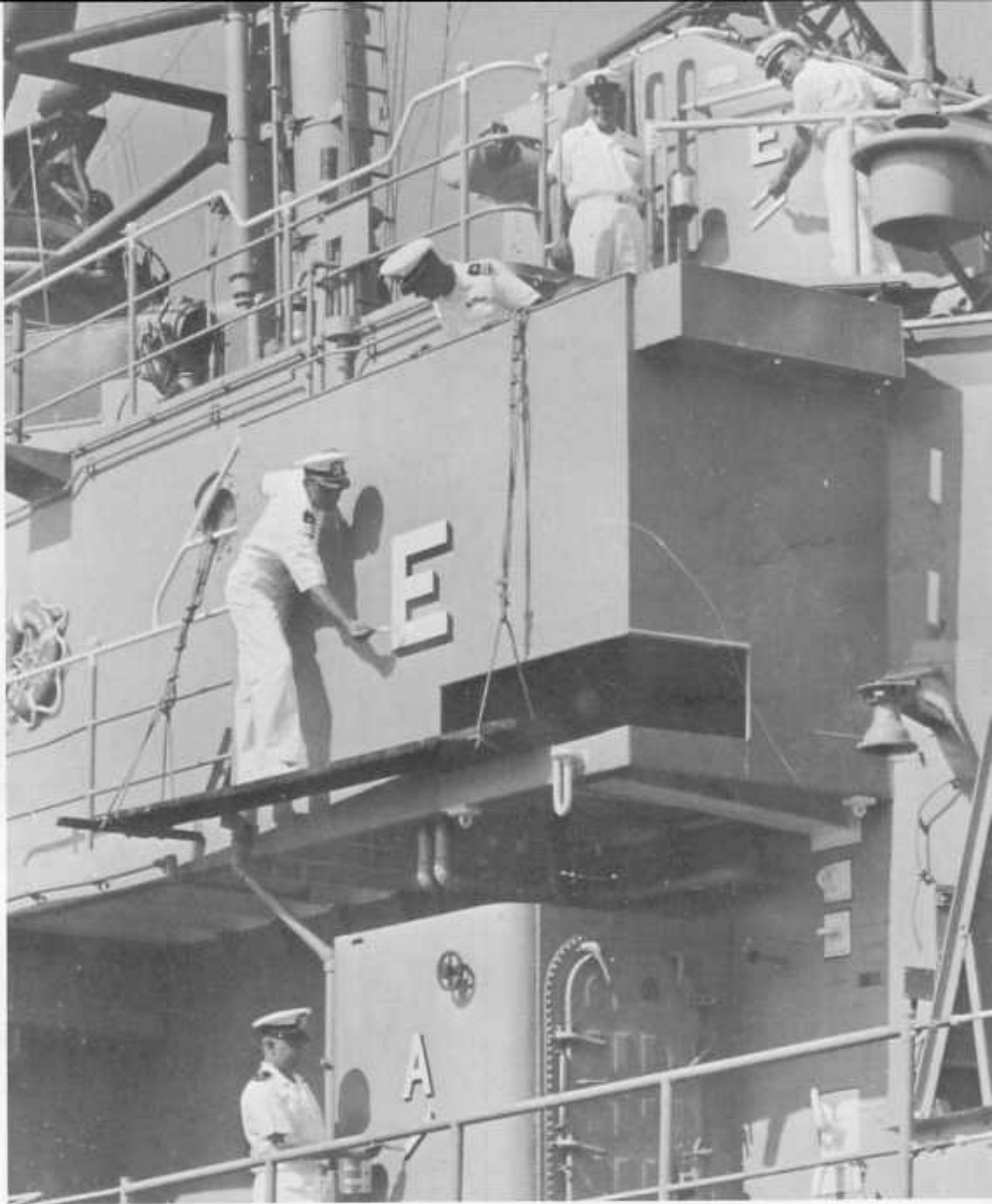
*One Lincoln
Two Washingtons
One Franklin
and a Barry Goldwater??*



Dream on



What dishpan hands?

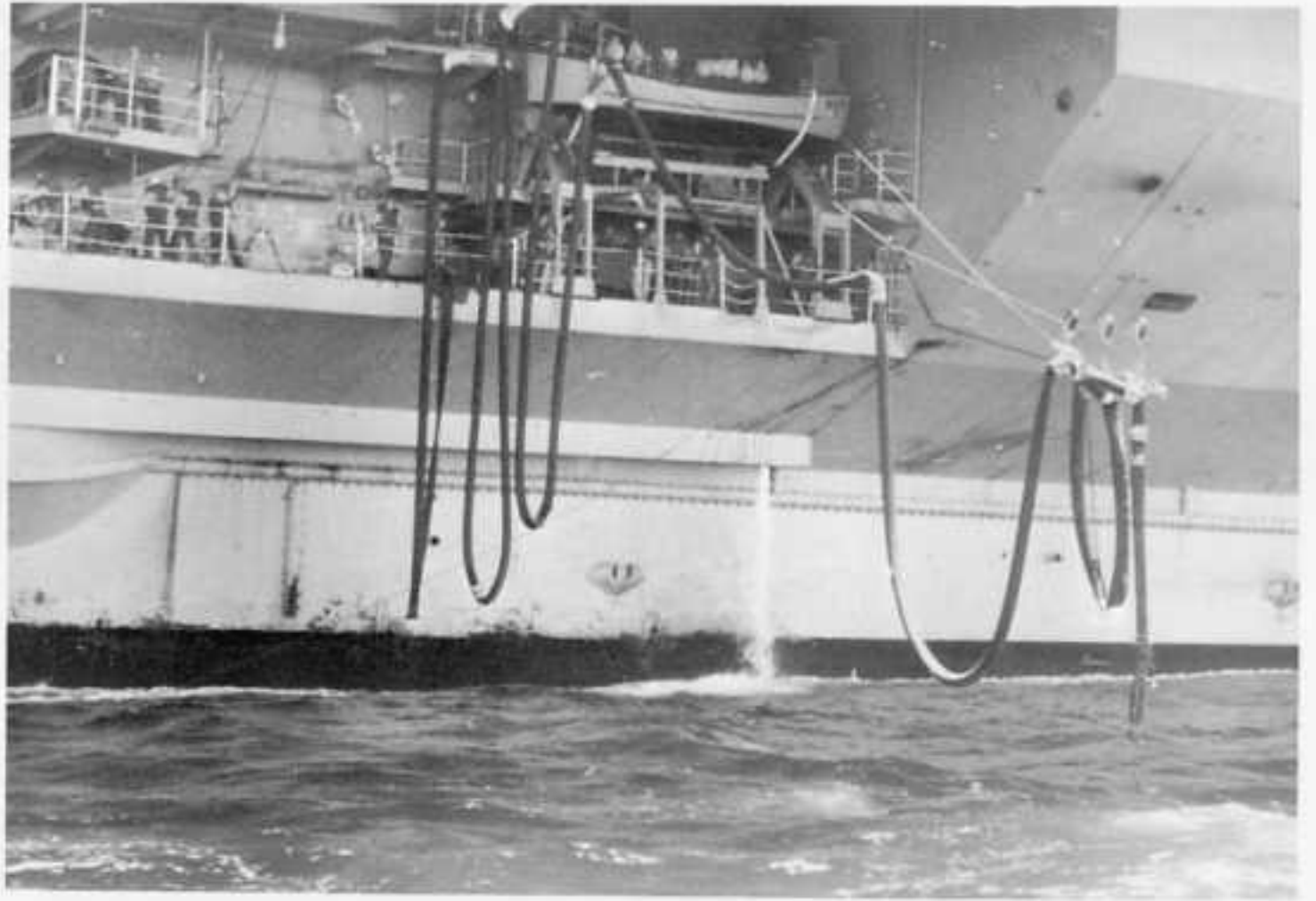


Puttin' on the Es

*Tetnus, typhus, typhoid, cholera,
smallpox, oh goodie*







Fill er up



Forward station

After station





And we unrepped . . .



Transferred at sea



And topped off

U.S.S. unrepped Sat. & Sun.

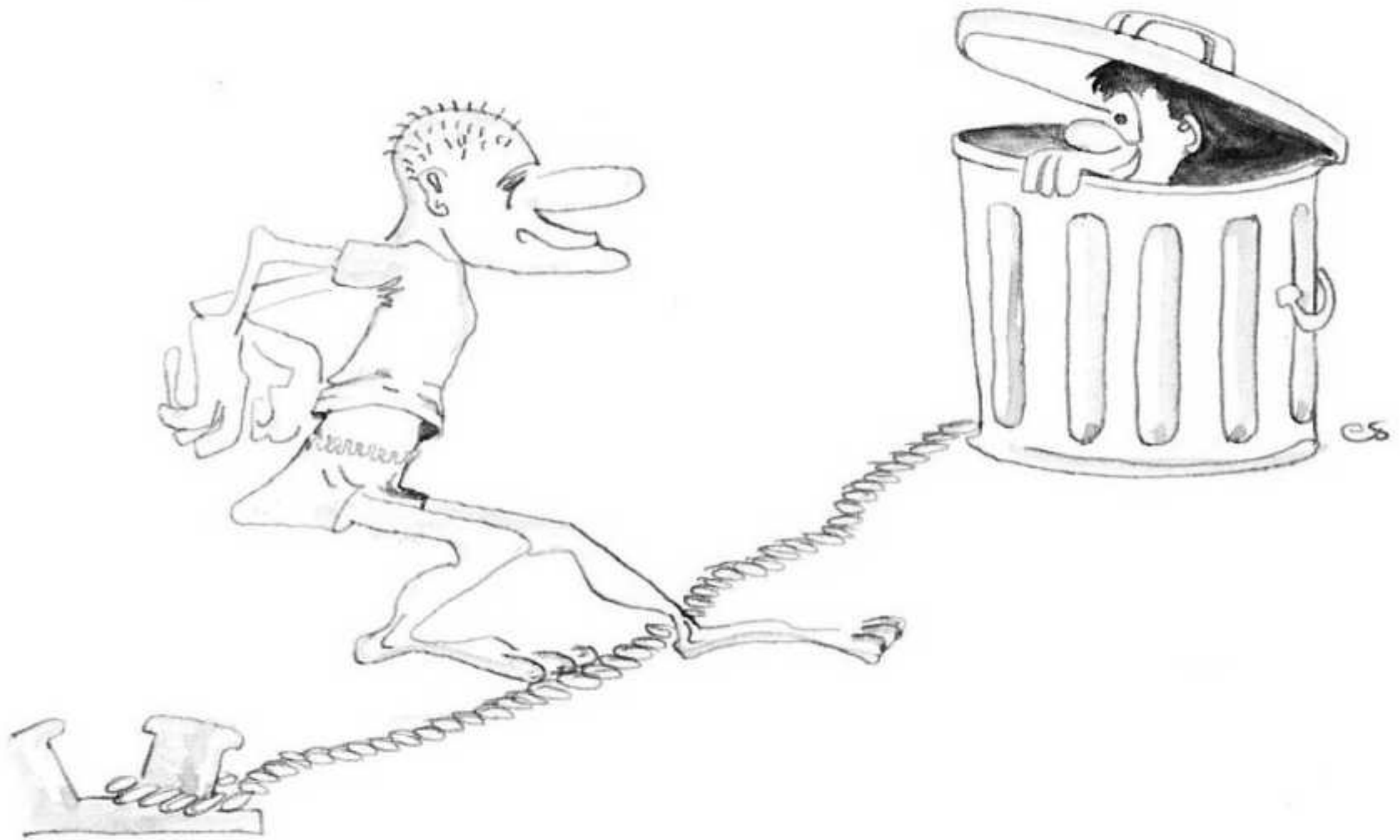




Buy me drink?



Crossing the LINE



One of the oldest traditions of the Navy, crossing the line, took place at Latitude 00.00 and Longitude 149.22 E for the DE HAVEN.

The events leading up to the initiation started on 27 April when the polliwogs wrought havoc upon the Trusty Shellbacks with fire hoses, grease and goo.

At 1900, word was passed for all Polliwogs to muster on the torpedo deck to await the arrival of the Master of the Deep, Davy JONES. When Davy and his royal crew arrived and were greeted by the Captain, and the Royal Court was brought to order. Summons were passed out to each polliwog with special watches and duties being assigned. Before Davy departed, the Captain made a final plea for mercy which was denied. Davy departed the ship with a promise to bring vengeance upon the slimmy polliwogs with chastisement by fire hose and flogging.



The Honorable Davy Jones



*To months ago, I couldn't even spel
ossifer, now I are won.*



And now a word from the defense

At 1300 with "JollyRoger" close up, the Polliwogs were mustered on the foc'sle. What fate awaited? Suddenly, the show was on the road, no question remained.

First the Polliwogs were branded with a color to denote the gravity of offense and pushed on to the royal dentist for a quick inspection. Next a snack of hot pepper and castor oil, after which the Royal barber removed many a polliwogs locks.

Then the ordeal - on hands and knees they faced a deck drenched by salt spray a lined with fire-hose wielding Shellbacks. This was only the start. Next the garbage chute - forty feet of stinking blackness followed by a wonderful torrent of salt water from a hose.

We had it made. Kiss the Queen's foot, kiss the baby's belly, and a dunk in our own private pool. Now we were Royal Shellbacks!



Now, secure the mess line



Three Musketeers



Uniform of the day



No comment



What Equator?



Filed for future reference





Leave the sideburns



1-2-3 Go



Remember all those shots Doc?



Thirsty



Water water everywhere





“Tours daily”

AUSTRALIA



Cairns Reception



*Captain Delaney and acting Mayor
Roberts-Townsville*



Welcome Aboard





Symbol of Australia





In honor of those who gave their lives so that our way of life might persevere, on this the 22nd anniversary of the Battle of the Coral Sea, we placed a wreath on their memorial. They died not in vain.





IN MEMORY OF WM DAVID STEWART

He sailed with us then

He sails with us now



*Unto Almighty God we commend the
soul of our departed brother*



*And we commit his body to the deep . . .
until the sea shall give up its dead*





AT LAST







Cruise Book Committee

Nielsen

Bowen

Barney

Semones

Norris

Seibert

OFFICERS

CDR J. A. DELANEY
LCDR C. L. HOROWITZ
LT S. W. BARBER
LTJG J. R. CARR
LTJG J. P. DAVIDSON
LTJG R. S. DEROSE
LTJG R. M. HOWLAND
LTJG J. I. LANEHART
LTJG L. G. McINTIRE
LTJG R. J. NOVACK
LTJG B. G. TOWNSEND
LTJG R. N. WALLACE
ENS R. M. BARNEY
ENS B. C. COOK
ENS E. B. JONES
ENS J. H. NEWSOM
ENS D. O. NORRIS
ENS T. E. SCHELENSKI

CHIEF PETTY OFFICERS

JENKINS, J. C., SMCS
COPE, C., SOC
DERION, D., SKC
JOHNSON, M. O., BMC
MILLER, R. F., MMC
SEIBERT, J. R., HMCA
TESTERMAN, L. B., BTC
VERCELES, F., RMCA
VOLK, F. E., RDC

PETTY OFFICERS FIRST CLASS

ADOLPHS, R. E., TM1
ANTONIO, A. V., CS1
BOWEN, V. R., YN1
CAVNESS, J. A., MM1
HARDING, K. M., EN1
HAZLETT, J. E., BT1
HEDREN, C. L., SH1
HIGGS, A. E., RM1
IGNACIO, L., SD1

KELLY, H. C., MM1
LEWIS, R., MM1
LUOMA, M. A., EM1
MEYERS, D. E., MM1
MILLIS, J. D., SF1
NEWLAND, G. L., GMG1
OGLE, B. C., GMG1
OVER, R. E., SK1
PITTS, J. Q., RD1
PRATT, D., SD1
RICE, G. R., MR1
RIVERA, P., ET1
SHOCKLEY, W. T., BM1
SORIANO, J. S., PN1
TIFFIN, J. C., BT1
VOEGLE, J. P., MM1
WIGGINGTON, B. D., QM1
WILLIS, R. L., BT1
WYLIE, W. C., QM1
YORK, L. E., RM1

PETTY OFFICERS SECOND CLASS

BATES, H. V., GMG2
BEAR, C. L., MM2
BEAVER, D. R., MM2
CARRO, S., CS2
FILKINS, F. C., DC2
FLOWERS, C. C., MM2
GARRIDO, J., BT2
GUSTIN, C. H., SOG2
HASS, W. A., RD2
HALE, R. E., EM2
HALL, J. C., FTG2
HARRIS, D. A., BT2
HERRINGTON, C. S., SM2
HOFSETZ, J. A., RM2
HOWARD, C. E., SOG2
HUNTER, K. R., SOG2
JACKSON, R. W., SFM2
JAMISON, D. L., GMG2
JENSEN, C. A., BT2
JOHNSON, R. F., EM2
KILLINGBECK, J. L., MM2

LEWIS, A. L., BT2
NAULT, R. P., SFP2
NEVELS, A., EN2
ROBINSON, J. M., BT2
ROBINSON, N. R., IC2
SEPULVEDA, L. G., BM2
SOCHIA, L. H., BT2
STREIFF, W. K., RD2
SWENSON, R. G., DK2
WALTERS, E. W., BM2
WHITE, J. P., SM2
YAP, L., SD2

PETTY OFFICERS THIRD CLASS

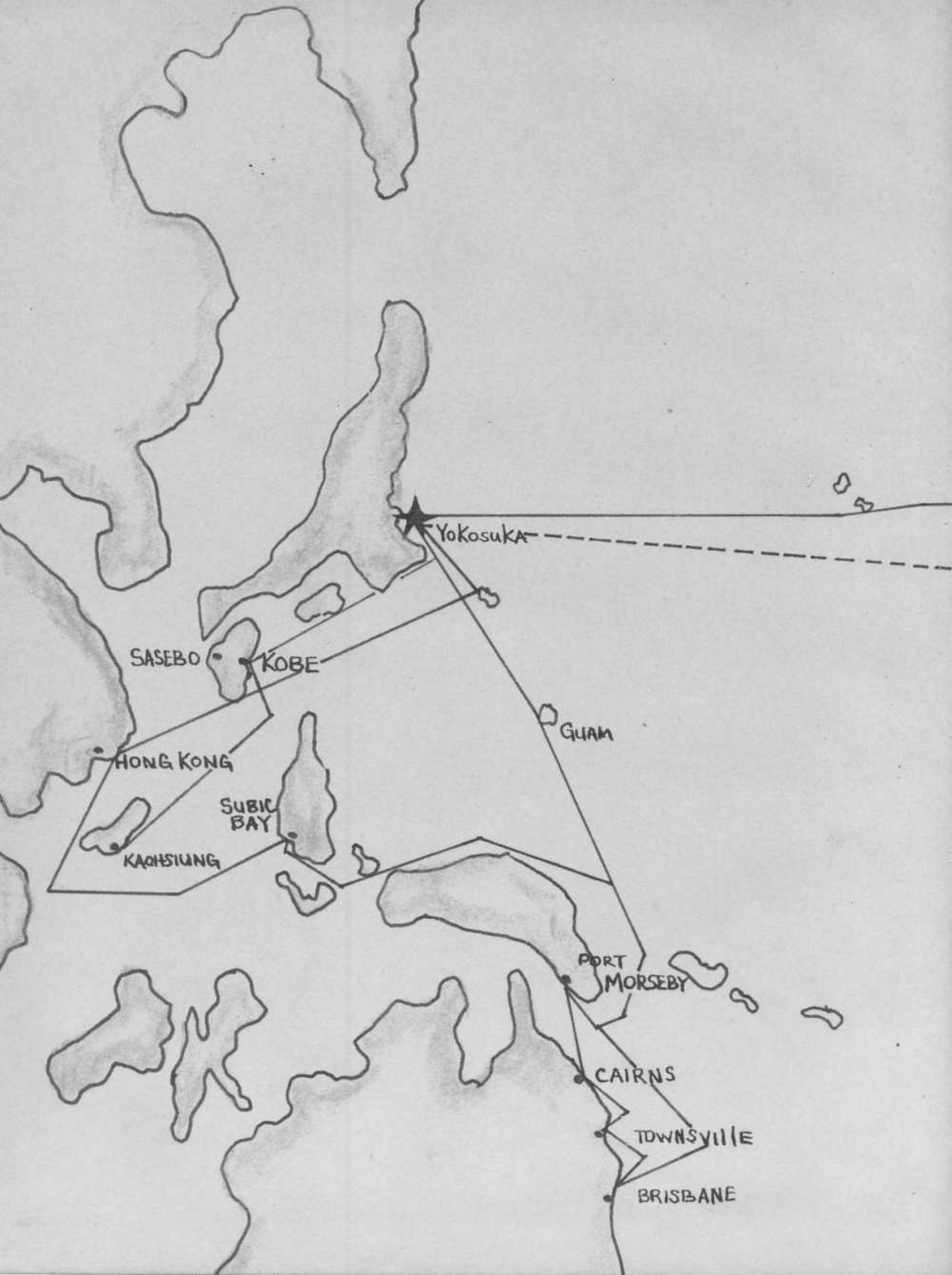
ATKINSON, J. W., RD3
BAXLEY, C. L., CS3
BOZEMAN, T. D., MM3
BRILL, A. W., ET3
BROWN, A. C., FTG3
BRYANT, J., MM3
BUNETTA, E. J., ETN3
BURANDT, T., EM3
BUTALLA, J. R., MM3
COSTIGANE, G. S., DK3
DAM, T. E., RM3
DAVIS, T. F., BT3
DIXION, R., CS3
ESELLER, R. C., BT3
FLAHARTY, A. R., RD3
GODWIN, S. L., SOG3
GUSTAFSON, J. W., SFM3
HAYES, R. S., BM3
HEADY, F. O., GMG3
HUFFORD, D., MM3
HUTCHINSON, J. L., RD3
INGRAM, R. C., ETR3
JONES, R., BT3
KIMBROUGH, J. R., PC3
KIRBY, G. D., FTG3
KOUBA, L. M., ETN3
LEDYARD, E. R., IC3
LIMB, F. A., SH3
LINDSEY, H. F., GMG3

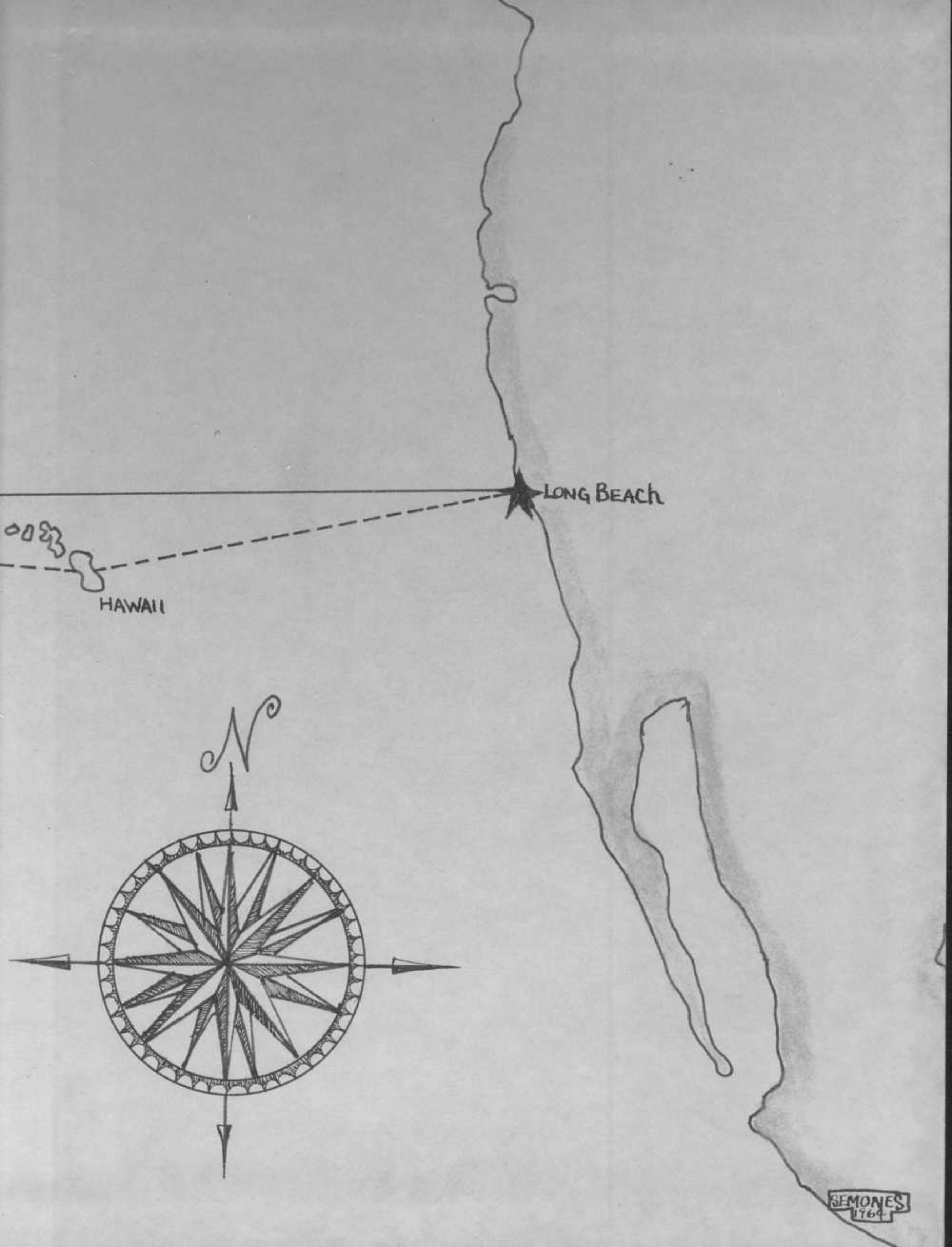
LUSTER, D. H., RM3
MARSH, D. D., SK3
McCOOL, J. P., CS3
McDOWELL, J. E., SK3
MELLILLO, N., SOG3
MILLER, J. D., RD3
MINTS, E. G., MM3
MITCHELL, D. L., EM3
NEWMAN, G. E., FTG3
NIELSEN, D. G., ETR3
O'NEAL, J. W., TM3
O'TOOLE, J. J., RM3
PALMER, J. A., BT3
PARKER, B. D., RM3
PATERSON, J. W., SM3
PATTERSON, G. W., MM3
PHELAN, E. J., MM3
RITENHOUR, R. P., SOG3
RODRIGUEZ, J. V., SM3
ROLAND, W. S., RD3
RUSSELL, S. F., RD3
SALEY, R. A., CS3
SAYLER, C. V., SH3
SEIDA, J. L., BT3
SHAW, D. M., BM3
SMITH, D. R., QM3
TAYLOR, A. L., TM3
VANDERLAN, B. E., BT3
WEBSTER, G. G., YN3
WILLIAMS, E., III, RD3
WILLIAMS, J. D., GMG3
ZEMAN, A. T., FTG3
NON-RATED

ANDERSON, E. A., RDSN
ANDREWS, G. D., SA
ANDREWS, L. M., SN
BABCOCK, J. C., FN
BADMAN, F. H., FN
BAIN, J. T., SN
BARONE, J. W., SOGSN
BATES, D. B., RMSN
BLAND, W. W., SN
BOREM, C. A., BTFN

BOYETT, C. O., FR
BRASHEARS, F. E., ETRSN
BRISCOE, T. F., SN
BRIZUELA, E., SN
BUCHANAN, R. D., FN
BUCKELY, G. E., FA
BRUNS, S. E., FA
CODY, F. B., SA
CONSTANTINO, R. O., TN
COWDY, W. J., SN
CROWL, V. K., FN
CURTIS, R. E., SN
DAVID, A. P., TN
DEBAECKE, I. J., SN
DONALDSON, T. D., SN
ELES, G., EMFN
ENGEMAN, C. L., MMFN
FLEMING, W. T., SN
FOREMAN, B. J., SN
FOREMAN, J. W., TMSN
FREDERICK, J. H., FN
FULLER, J. F., FA
GALVIN, W. J., RDSN
GLAESER, A. L., SN
GREHALVA, A. T., SN
HARDING, M. E., FN
HARDWICK, D. G., SN
HARRISON, W. F., SN
HEDREN, K. L., FA
HONADEL, R. F., FA
HOTTLE, M. W., SN
HUNTER, F. J., SN
ILANO, A. R., TN
JOHNSON, R. D., SA
JONES, H. W., FTGSN
KATSMA, R. L., BTFN
KEE, N. E., MMFN
KROG, R. D., SN
LAMBERT, C. L., SA
LANDKAMMER, R. L., SN
LARKINS, E. H., YNSA
LINTHICUM, D. L., SA
LONG, S. F., SN
LUBLINER, D. L., FA
MACHUTA, K. R., SN

MARION, R. G., ETRSN
McCARTY, E. F., ICFA
McCREERY, T. M., ICFN
McKENNA, E. J., SN
McKENNA, F. J., SN
McKNIGHT, K. J., FN
McNICHOL, T. F., SA
NALL, J. T., SOGSN
NELSON, D. G., SN
NETZER, W. J., MMFN
PAXTON, W. L., SA
PETERSEN, R. L., FA
PHELPER, R. L., FA
POE, R. C., SN
PRICER, J. D. J., SN
REAGAN, B. J., SA
REECE, G. S., GMGSN
REED, L. A., EMFN
REDING, D. C., SN
REMILLARD, J. P., RMSN
RINDELS, D. L., MMFN
ROMERO, G. W., SN
SANTANGELO, SA, FA
SARINSKE, R. L., FTGSN
SELAKE, J. P., SN
SEMONES, R. C., RMSN
SMITH, J. L., SN
SMITH, J. R., SN
STEPHENS, D. R., SN
STEWIG, R. B., RDSA
STONE, C. D., SN
STRONG, R. D., SOGSN
THOMAS, P. A., FN
THOMPSON, D. E., SN
TIPPELT, D. C., SN
VALENTINE, H., SA
VENEGA, G. L., SN
WELLS, G. E., EMFN
WHISENANT, J. E., SA
WILLIAMSON, M. L., FA
WILSON, D. T., MMFN
WINGERT, J. D., SN
WRIGHT, L. A., SN
WOOD, F. C., FA
ZEIGLER, D. C., ENFN





LONG BEACH

HAWAII

SEMONES
1764